

# Xiomaro Exhibits Photos at Weir Farm

## *Paying Homage to An American Painter*

By Joe Scotchie

For the past 30 years, Xiomaro (pronounced "see-oh-MAH-ro") Fotografia, a renowned photographer, has made Roslyn his home. His latest project has been to create and exhibit a photographic art series on the landscape of the Weir Farm Art Center in Wilton, CT, a place that is the only National Park Service site dedicated to American painting.

The Weir Farm is named for the famed American painter, J. Alden Weir, who once described the homestead as "The Great Good Place," and that is the name that Xiomaro has selected for his latest photo series.

"The images progress from the moody shadows of winter to the colorful hints of early spring," said Xiomaro. Weir purchased the property in 1882 and it became a source of inspiration not only to his artwork, but also to such artist friends as John Singer Sargent, Mary Cassatt and Albert Pinkham Ryder.

Xiomaro said that his photo series pays homage to Weir's "spirit." Weir, Xiomaro noted, began painting in the realism style and later switched to the tonalism and impressionism that dominated his own time period. The photographer adds that, "these same styles were a subconscious source of inspiration" for his photographic works on the Weir homestead.

Xiomaro's photography has already found several buyers. More important, 10 percent of the sales are being donated to



**XIOMARO**

Doctors Without Borders for the benefit of a Haitian Hurricane Relief.

Last year, Xiomaro applied for the Weir project by submitting some select artwork, along with his biography. At the Weir farm, a group of art experts and historians review each application and then extend their invitations. Xiomaro was se-

*(continued on page 25)*

VOL. 134, No. 44 WWW.ANTONNEWS.COM

THURSDAY, APRIL 14, 2011

75 CENTS

FOUNDING COMMUNITIES OF ROSLYN, ROSLYN HARBOR, ROSLYN HEIGHTS, ROSLYN ESTATES, FLOWER HILL, EAST HILLS, GREENVALE, AND ALBERTSON

Founded 1877 - Published by Anton Community Newspapers

# The Roslyn News

lected and in March, he spent one month living and working on the Weir Farm grounds as part of its Artist-In-Residence program. The program itself attracts artists from all over the world. Up to 115 artists from the United States, Germany, Australia, Tunisia, and India have all traveled to Connecticut to participate and hone their creative artwork.

A native of Brooklyn, Xiomaro moved, first with his family to Flushing and later to Roslyn Heights in the late 1970s, where he has carved out a career in the arts.

In college, he studied art history, painting, drawing, and literature. Later, he turned his attention to writing and arranging music, which he performed both in public and in the studio.

"This background was essential in the two decades I spent as an entertainment industry professional," he related on his website. "I advised both celebrities and newcomers about image development, designed graphics and websites and conducted marketing and promotional campaigns based on concepts I created. During that time, I taught these subjects at seminars and industry conferences."

Xiomaro also observed the photographer Ellen von Unwerth, who has profiled such famed models as Claudia Schiffer and Anna Nicole. This inspired Xiomaro to move into yet another field.

"The ability to create that transformation was intriguing and moved me behind the camera," he added. "A body of artistic work soon followed that included portraits, landscapes, digital collages, bodyscapes and abstracts. Many of these photos were regularly exhibited and sold at my coffeehouse concerts throughout



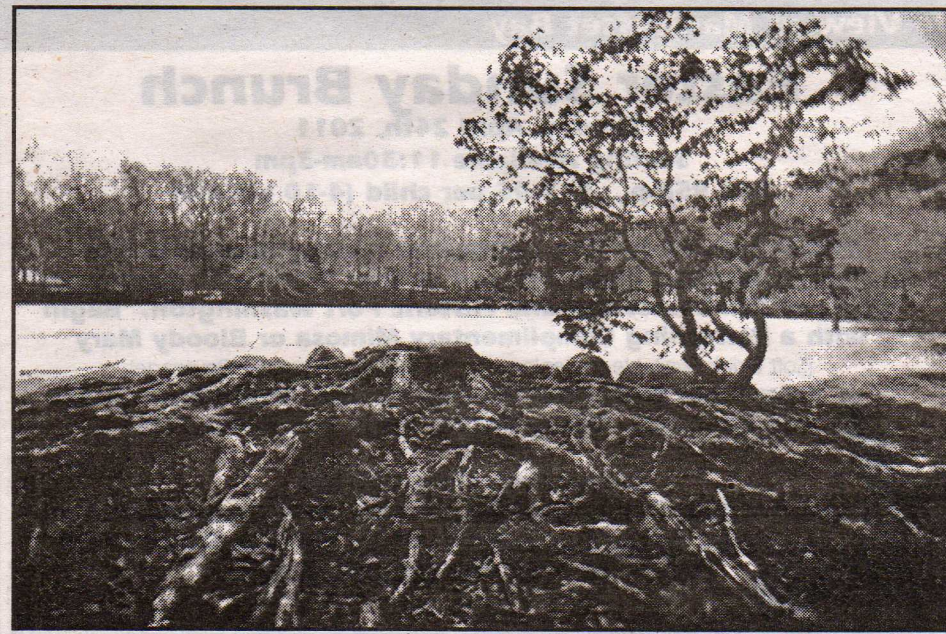
**The Spirit of J. Alden Weir, a photo of the Weir house by Xiomaro.**

the Northeast."

In addition to artwork, Xiomaro is a practicing attorney in the field of entertainment law, where his clients have included the Village People and Greg Gurfeld of Fox News. During the 1980s, he also managed the pop star Lisa Lisa, spending time on the road and in the studio in guiding her successful career.



**Spring (No. 2). Autumn Leaves in Marsh, by Xiomaro.**



**Winter (No. 1), more artwork by Xiomaro.**