



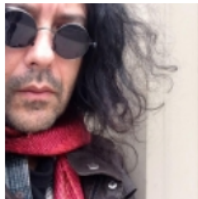
Artist to Create NET Photographic Series

Meet artist Xio Xiomaro as he begins his journey to photo document the New England Trail.

CFPA Commissions Weir Farm Artist To Highlight the New England Trail

By: Clare Cain

CFPA and its partners have commissioned Xiomáro, a Visiting Artist at Weir Farm National Historic Site in Wilton, to create a photographic series that will bring wider acclaim to the federally designated New England Trail (NET). Xiomáro (SEE-oh-MAH-ro) is an artist known for creating



artistic photographic collections that help draw wider public attention to national parks and historic sites. Since 2011, Xio has been the Visiting Artist at Weir Farm National Historic Site, in Wilton, CT.



Xiomáro is a nationally recognized artist, curator, writer and speaker whose photography has been covered by *The New York Times*, *News 12*, *Newsday*, *The Huffington Post* and *Fine Art Connoisseur*. His photography has been widely exhibited at Harvard University, Long Island Museum, Frances Tavern Museum and other major institutions. Xiomáro has completed several commissions for the National Park Service including Boston Harbor Islands National Recreation Area and Theodore Roosevelt's Sagamore Hill in Oyster Bay, Long Island. A large exhibit of his Weir Farm photographs will be exhibited in October 2016 at the Connecticut Capitol/Legislative Office Building in Hartford in celebration of the National Park Service's Centennial.

"Using the camera as a palette, my goal is to showcase the unique beauty and history of Connecticut's NET and the dedicated volunteers who care for it. The public needs to know of this resource and increased visitation is a much needed economic driver for the communities touched by the trail," says the artist.

Learn more about Xio and view his work at www.xiomaro.com