

Xiomáro

To Enter Is To Inhabit His Spirit



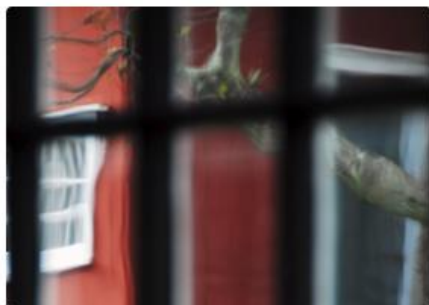
Xiomáro

Yea, Many Painters Turned This Doorknob



Xiomáro

Who Put Away Formalism for Impressionism



Xiomáro

As the Bending of Light Sparked New Ideas



McRay Magleby

Wave of Peace



Linda Etherington

Light Plums and a Dark Hat



ARTIST

Xiomáro

TITLE

To Enter Is To Inhabit His Spirit

DATE

2011

MEDIUM

Digital photograph

DIMENSIONS

25 x 17 in

LOCATION

North Reading Area

[VIEW ON FLOORMAP](#)

Xiomáro is a New York based artist who was commissioned from the U.S. National Park Service to photograph the home and studio of American Impressionist J. Alden Weir and the studio of Mahonri Young. These photographs are selections from the exhibition "Weir Was Here- Secret Rooms, Doors, and Windows" held in the Lee Library in 2011. They feature details of the Weir house at the historic Weir Family Farm in Connecticut.



ARTIST

Xiomáro

TITLE

Yea, Many Painters Turned This
Doorknob

DATE

2011

MEDIUM

Digital photograph

DIMENSIONS

25 x 17 in

LOCATION

North Reading Area

[VIEW ON FLOORMAP](#)

Xiomáro is a New York based artist who was commissioned from the U.S. National Park Service to photograph the home and studio of American Impressionist J. Alden Weir and the studio of Mahonri Young. These photographs are selections from the exhibition "Weir Was Here— Secret Rooms, Doors, and Windows" held in the Lee Library in 2011. They feature details of the Weir house at the historic Weir Family Farm in Connecticut.



ARTIST

Xiomáro

TITLE

Who Put Away Formalism for
Impressionism

DATE

2011

MEDIUM

Digital photograph

DIMENSIONS

25 x 17 in

LOCATION

North Reading Area

[VIEW ON FLOORMAP](#)

Xiomáro is a New York based artist who was commissioned from the U.S. National Park Service to photograph the home and studio of American Impressionist J. Alden Weir and the studio of Mahonri Young. These photographs are selections from the exhibition "Weir Was Here— Secret Rooms, Doors, and Windows" held in the Lee Library in 2011. They feature details of the Weir house at the historic Weir Family Farm in Connecticut.



ARTIST

Xiomáro

TITLE

As the Bending of Light Sparked New Ideas

DATE

2011

MEDIUM

Digital photograph

DIMENSIONS

25 x 17 in

LOCATION

North Reading Area

[VIEW ON FLOORMAP](#)

Xiomáro is a New York based artist who was commissioned from the U.S. National Park Service to photograph the home and studio of American Impressionist J. Alden Weir and the studio of Mahonri Young. These photographs are selections from the exhibition "Weir Was Here— Secret Rooms, Doors, and Windows" held in the Lee Library in 2011. They feature details of the Weir house at the historic Weir Family Farm in Connecticut.

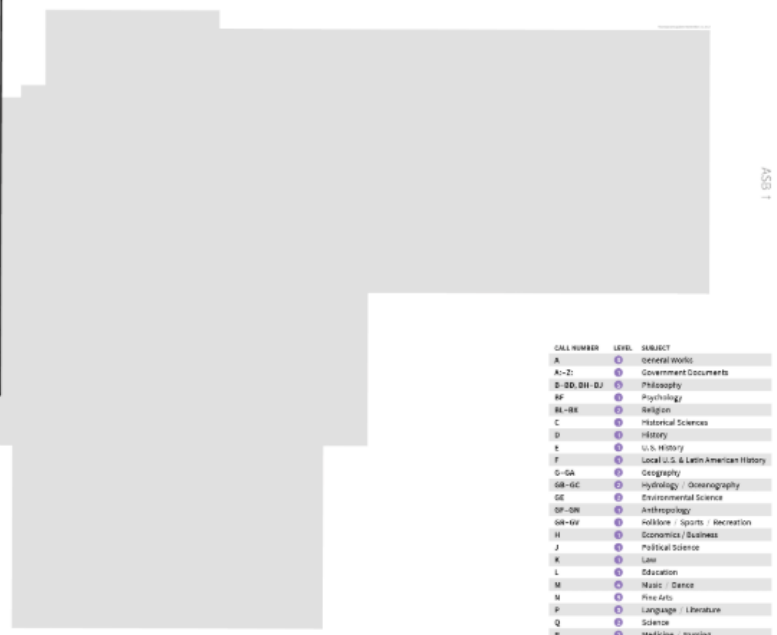
► NORTH

floormaps.lib.byu.edu

JFSB 1 TMCB 1



- Elevators
- Stairs
- Restrooms
- Emergency exits
- Drinking fountains
- Staff areas
- Classrooms
- Labs & collaborative
- Exhibits
- Closed areas
- Help desks
- Bookshelves
- Study rooms
- Lockers
- Correls
- Printers
- Group study tables
- Soft seating
- Computer labs (Mac)
- Computer labs (Windows)



CALL NUMBER	LEVEL	SUBJECT
A	5	General Studies
A-Z	5	Government Documents
B-DD, BH-DJ	5	Philosophy
BF	5	Psychology
BL-BK	5	Religion
C	5	Historical Sciences
D	5	History
E	5	U.S. History
F	5	Local U.S. & Latin American History
G-GA	5	Geography
GB-GC	5	Hydrology / Oceanography
GD	5	Environmental Science
GF-GH	5	Anthropology
GN-GV	5	Hobbies / Sports / Recreation
H	5	Economics / Business
J	5	Political Science
K	5	Law
L	5	Education
M	5	Music / Dance
N	5	Fine Arts
P	5	Language / Literature
Q	5	Science
R	5	Medicine / Nursing
S	5	Agriculture
T-TP	5	Engineering / Technology
TB	5	Photography
TS-TX	5	Manufacturing / Home Economics
U	5	Military Science
V	5	Naval Science
Z	5	General Bibliography
999-999	5	Juvenile Collection
SAMPLER	5	Popular Reading